



INTERNATIONALLY RECOGNIZED ENGLISH TEACHING CERTIFICATES AND DIPLOMAS

Dr. Sedigheh Shakib

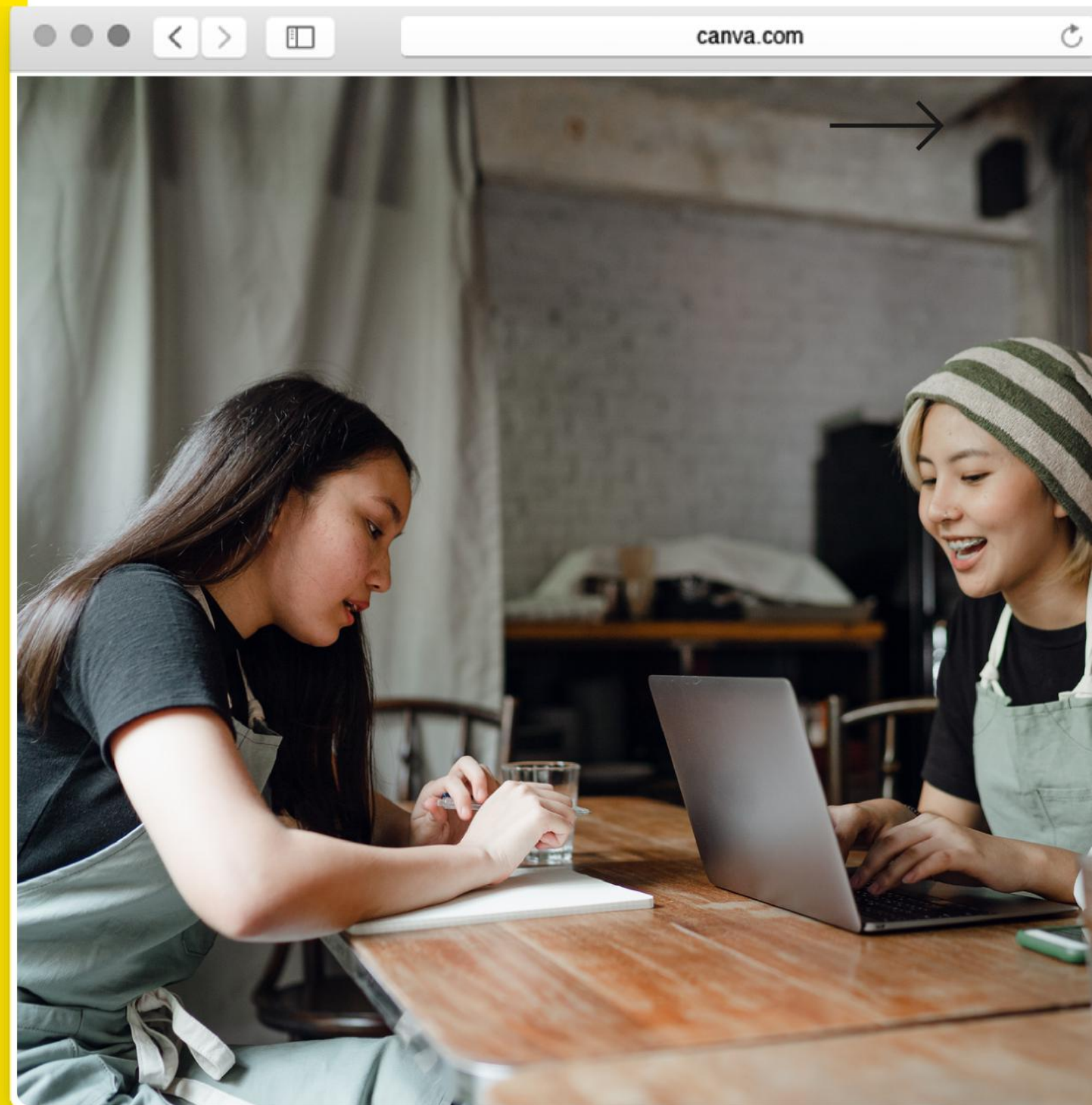
s.shakib@akfauniversity.com

AGENDA



- **CELTA**
- **SIT TESOL**
- **Cert TESOL**
- **DELTA**

Why do I need to get a certificate or diploma to be eligible to teach English?





CELTA

(Certificate in Teaching English to Speakers of Other Languages)

It is the world's most widely recognized English teaching qualification and the most often requested by employers.



CELTA

CELTA is a type of TEFL certificate that was originally designed by International House in 1962, then given to Cambridge University to moderate/manage in 1988.

WHO IS CELTA FOR?

- **New teachers with no experience starting their career**



- **Teachers with some experience who want to develop their skills**



- **First-language English speakers and non-first-language speakers**
- **Teachers who want to travel and teach English**

CELTA ENTRY REQUIREMENTS



- You must be **at least 18** years old.
- You must have finished high school/secondary education and be able to start a degree-level course.
- You must have an advanced level of English, **equivalent to C1**.
- You must have the potential and desire to develop the necessary skills to become an effective teacher and complete the written assignments and teaching practice.

CELTA ENTRY UNOFFICIAL REQUIREMENTS



- You really **want to teach** English.
- You have at least some understanding of **how English works**.
- You **relate well to other people**.
- You want **a practical teaching qualification**, not an academic one.
- You can **evaluate your strengths and weaknesses** as well as others.
- You can **explain succinctly, instruct clearly, and assist sympathetically**.
- You are prepared **for four weeks** of hard work but will cope.

FIND A TEACHING QUALIFICATION CENTRE

Turkey is a good choice as the cost of living is cheaper.

Cambridge English Teaching

CELTA
The gold standard
teaching qualification

three out of four English language
teaching jobs require a CELTA
qualification*



FIND A TEACHING QUALIFICATION CENTRE

Looking for a different type of centre? Visit our [Find a Centre](#) page to choose.

Turkey



Select a region/province



Select a city



All teaching qualifications



Search

TR076 - Izmir University Of Economics

Izmir

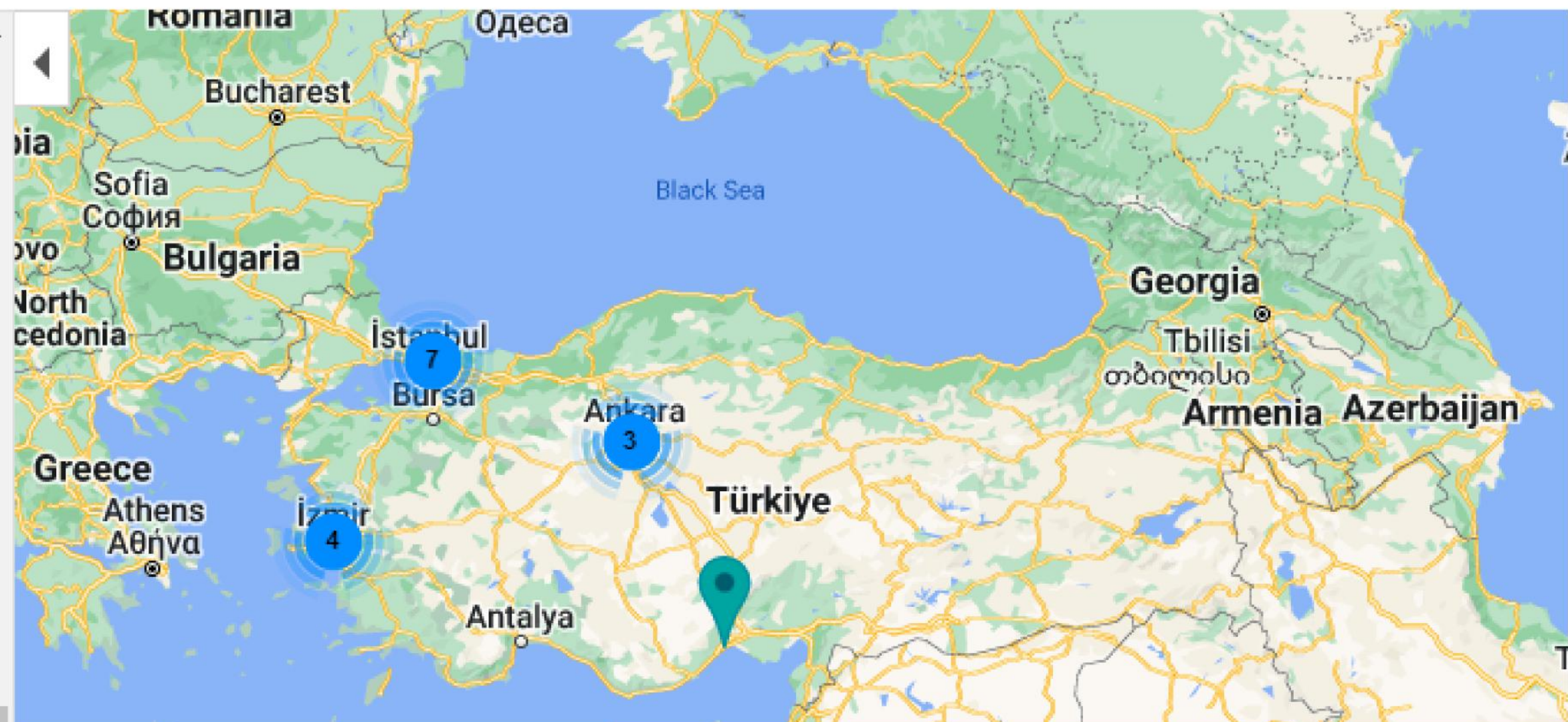
TR175 - MEF University

Istanbul

TR036 - Mentoracollege Teacher Training Centre

Istanbul

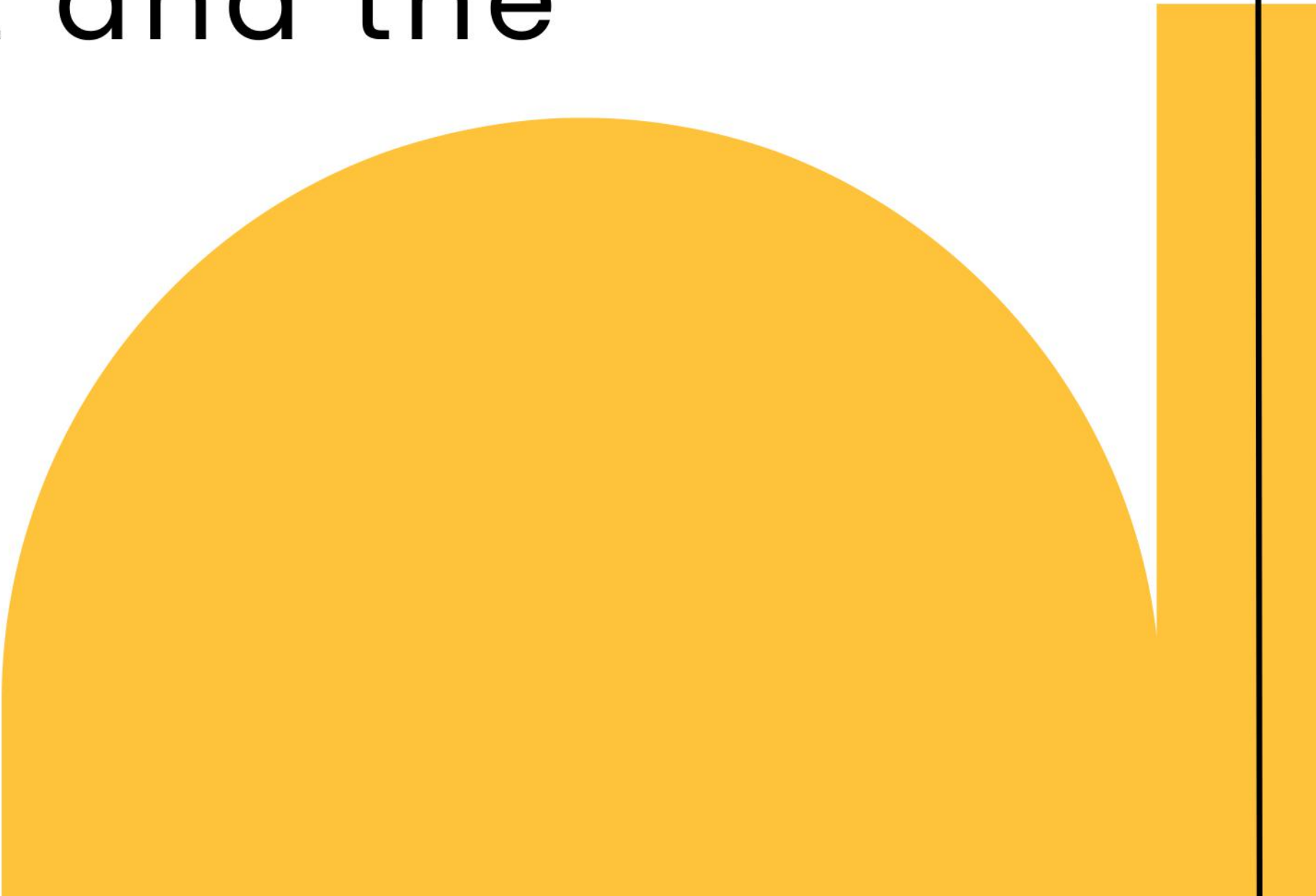
TR022 - Study in UK - Turkey



CELTA FEE

£1300

Add the flight ticket and the cost of living and accommodation.



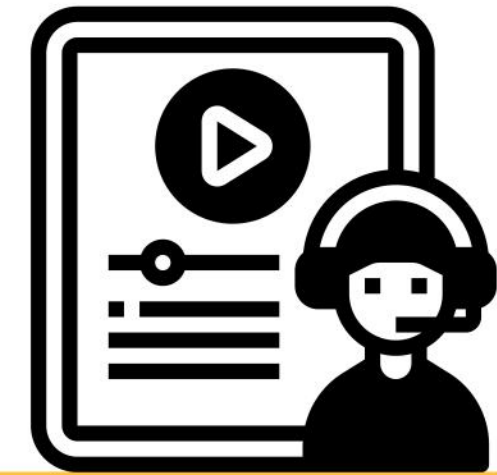
WAYS TO TAKE CELTA



Face to face



Online



**A blend of online
and face-to-face.**



FACE TO FACE CELTA

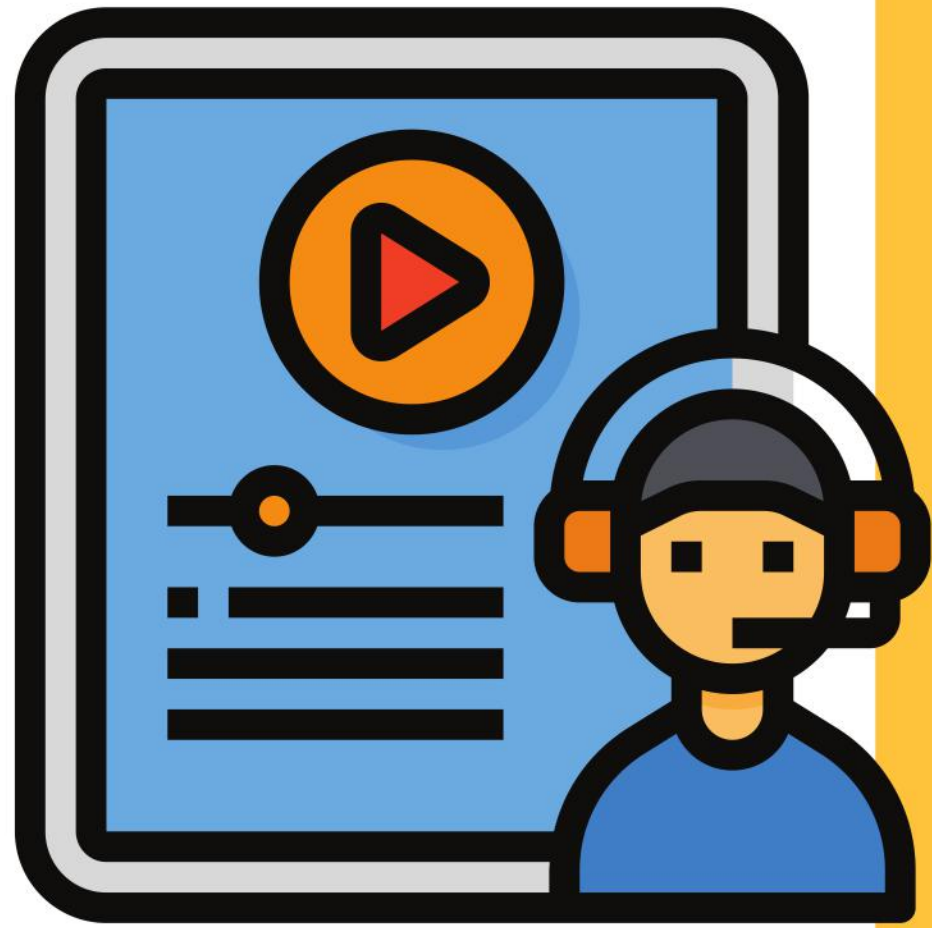
Your teaching practice will be in a classroom with groups of learners and observed by your trainer. Your training sessions will be face-to-face or a combination with online study.

ONLINE CELTA



Your training and teaching practice will be in an online learning environment with groups of learners and observed by your trainer.

It's particularly useful if you want the flexibility of online study if you want to limit travel costs, or if you plan to teach English online, as you'll learn more about the digital tools needed.



BLENDED

Your training may be online, face-to-face, or a blend of online and face-to-face.


Your teaching practice will include face-to-face lessons in a classroom and lessons in an online learning environment. Your teaching practice will be with groups of learners and observed by your trainer.

HOW DOES THE CELTA COURSE WORK?

- All CELTA courses include at least 120 hours of study
- The topics cover practical teaching skills and the theory behind them
- You'll get real-life teaching experience with groups of learners
- You'll receive feedback and advice on your teaching
- You'll be assessed on your teaching skills and written assignments


THE CELTA COURSE IN DETAIL



- Tutorial support and consultation
 - Supervised lesson planning
 - 6 hours assessed teaching practice per candidate supervised by a course tutor
 - Feedback on teaching practice
 - Peer observation of teaching practice (i.e., watching the other candidates' lessons)
 - 6 hours of directed observation of lessons taught by experienced ELT professionals, up to 3 hours of which may be of filmed lessons
- 

THE CELTA COURSE IN DETAIL



- You should also allow for 80 additional learning hours for pre-course preparation, reading, research, assignment writing, lesson preparation, and record keeping.
 - The maximum ratio of candidates to tutors is one tutor for every six candidates, and there are at least two tutors in each course.
- 

COURSE TOPICS

- Learners and teachers, and the teaching and learning context
- Language analysis and awareness



- Language skills: reading, listening, speaking, and writing
- Planning and resources for different teaching contexts



- Developing teaching skills and professionalism

ASSESSMENT

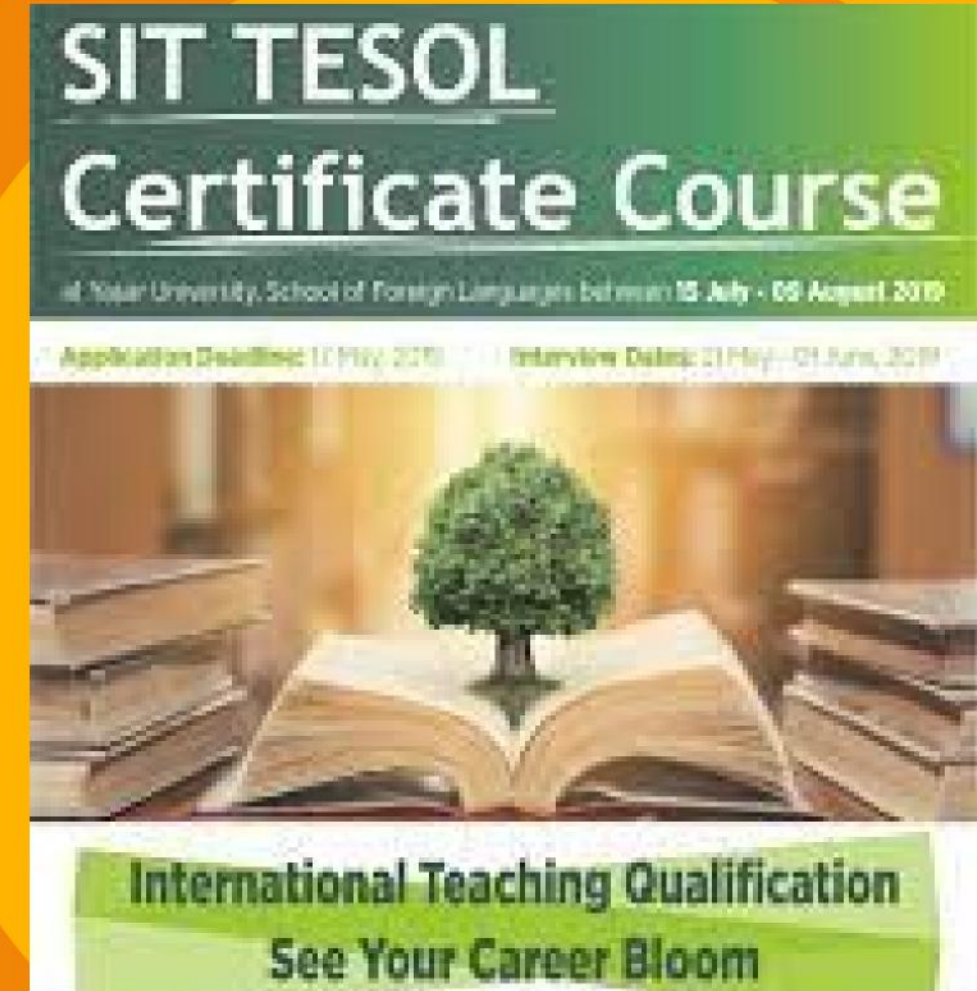
Table 2 Summary of the primary assessment tasks for each topic

Topics	Assessment
1. Learners and teachers, and the teaching and learning context	Planning and teaching – Written assignment 1
2. Language analysis and awareness	Planning and teaching – Written assignment 2
3. Language skills: reading, listening, speaking and writing	Planning and teaching – Written assignment 3
4. Planning and resources for different teaching contexts	Planning and teaching – Written assignment 4
5. Developing teaching skills and professionalism	Planning and teaching – Written assignment 5



SIT TESOL

The SIT TESOL Certificate brings the recognition and prestige of the distinguished School for International Training (SIT), a leader in TESOL and English education for over 50 years.



Recognition

CERT TESOL

- Fully accredited, this certificate is accepted at Level 5 of the European Qualifications Framework.
- The SIT TESOL can open doors to professional opportunities around the world.
- Alumni of the program have gone on to teach English at schools and universities around the world and serve as English Language Specialists for the U.S. Department of State.

SIT TESOL Format and Length

Delivered through **a virtual* or in-person** format, through this **180-hour** course, you will develop the teaching, lesson planning, and classroom management skills essential to **teaching English in the United States and abroad.**



THE SIT TESOL CERTIFICATE **DIFFERENCE**



One of the top 3 most highly respected TESOL certificates in the world



Level 5 European Qualifications Framework



Experiential, hands-on learning modules rooted in American education philosophy



A program of World Learning, accredited by SIT Graduate Institute, a leader in TESOL for more than 50 years



Supportive learning environment with a 1:6 teacher to student ratio



Earn five graduate credits awarded by SIT Graduate Institute

Program Locations

[Link](#)

July 3 – July 28, 2023

Yasar University

İzmir, Turkey | tesol@yasar.edu.tr

July 3 – July 28, 2023

TOBB University of Economics and Technology

Ankara, Turkey | makdogan@etu.edu.tr

Admission Criteria

- Having a high school degree
- A good understanding of the English language and solid writing skills.
- Apply along with a one-page essay.
- Non-native speakers must have a minimum TOEFL score of 600 on the written test or 250 on the computerized version, an IELTS Band 7.0 or higher, or a CEF C1.
- Non-native speakers must also have a second interview to ensure their listening/speaking skills are adequate to take the course.

SIT TESOL Fee

1

Tuition for the SIT TESOL Certificate, \$2,450, covers all materials.

2

A \$650 nonrefundable deposit is required to hold your space.



Cert TESOL

The Trinity Certificate in Teaching English to Speakers of Other Languages (CertTESOL) is a TESOL or TEFL (Teaching English as a Foreign Language) certificate designed for people with little or no experience in teaching English and for those with experience who require an internationally recognized initial teacher education qualification.





Cert TESOL

The CertTESOL is rated at Level 5 on Ofqual's Regulated Qualifications Framework, a comparable level to the second year of an undergraduate degree

It comprises a minimum of 130 hours, with an expected minimum of 70 hours further study required (Total Qualification Time: 200 hours).

Flexible course delivery

Full-time, part-time, face-to-face, online or blended study options, depending on course provider



200 hours

Essential TESOL knowledge and skills

- ▶ Unit 1: Teaching skills
- ▶ Unit 2: Language Awareness & Skills
- ▶ Unit 3: The learner profile
- ▶ Unit 4: The materials assignment
- ▶ Unit 5: The unknown language



NB

The Cambridge CELTA, SIT TESOL, and Cert TESOL are the most respected and recognized TEFL (or TESOL) certificates around the world

The reason is that employers and schools know that these graduates took a high quality course which is externally moderated.

DELTA

**(Diploma in Teaching English to Speakers of
Other Languages)**

Take your teaching career to the next level

WHO IS DELTA?

DELTA is an advanced blend of theory and practice that provides professional development for teachers with at least two year's experience. It gives you skills and techniques that will help you throughout your career.

WHO IS DELTA FOR?

- English language teachers who have been teaching for at least two year
- English language teachers who want to progress into more senior roles, such as head of English and teacher training.
- Experienced teachers who want to extend their expertise in a specialist area.
- First-language English speakers and non-first-language speakers with a CEFR Level of high C1 or above.



KEY FEATURES OF DELTA

- DELTA is taken over three modules – you can take as many modules as you like in any order.
- Deepens your knowledge and understanding of English language teaching.

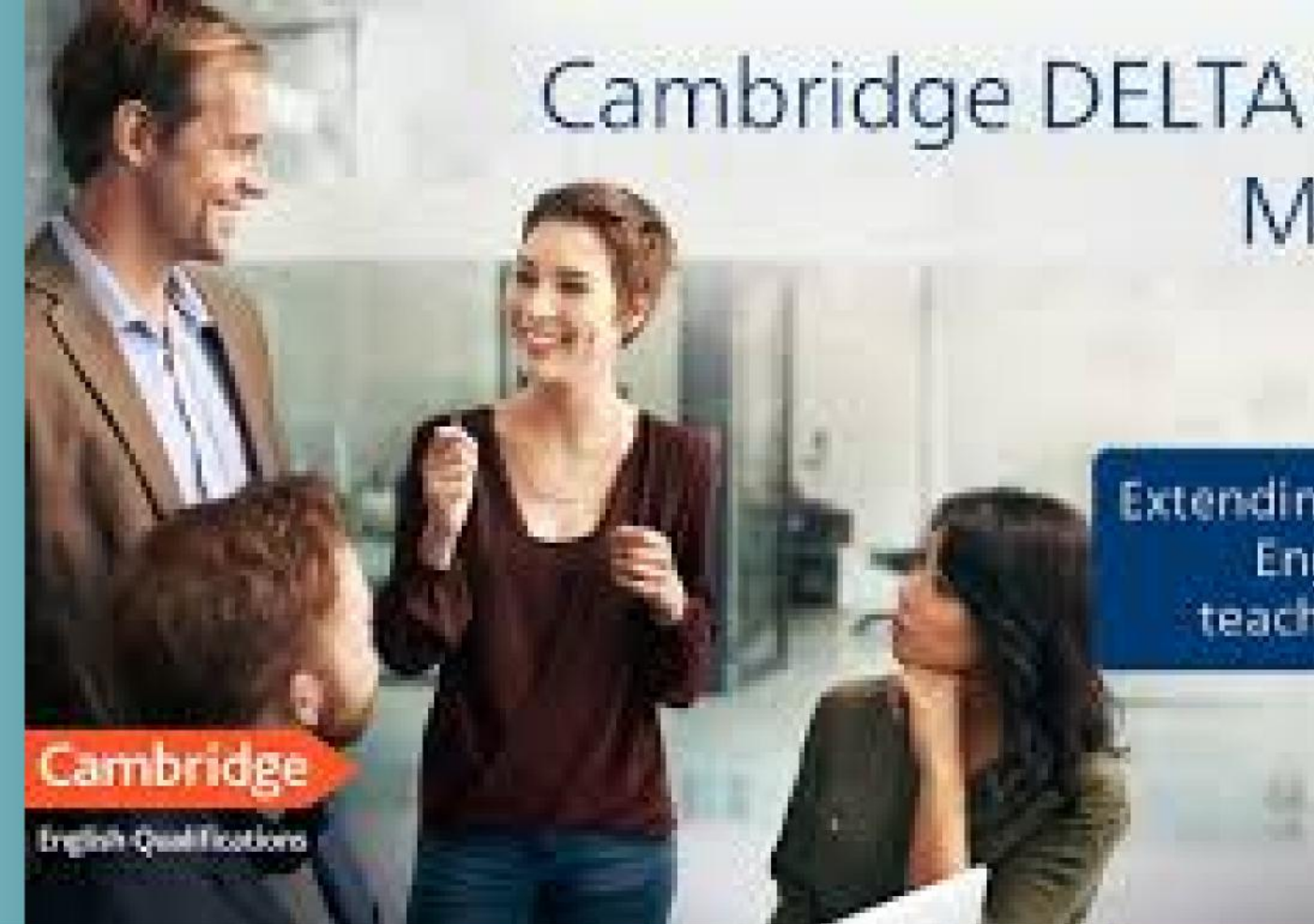


KEY FEATURES OF DELTA

- **Internationally recognized, highly respected, and a benchmark for quality.**
- **Enables you to develop your career and prepare for more senior teaching roles.**



ABOUT THE MODULES



Module One

Understanding Language, Methodology and Resources for Teaching

Module Two

Developing Professional Practice

Module Three

Option 1: Extending Practice and ELT Specialism
Option 2: English Language Teaching Management

WHAT WILL I LEARN IN EACH DELTA MODULE?

Module one

This module focuses on extending and developing candidates' knowledge and understanding of teaching and learning English in a range of contexts.

WHAT WILL I LEARN IN EACH DELTA MODULE?

Module Two

This module focuses on developing awareness and expertise in the principles and professional practice of teaching English in a range of contexts.

WHAT WILL I LEARN IN EACH DELTA MODULE?

Module Three, option one

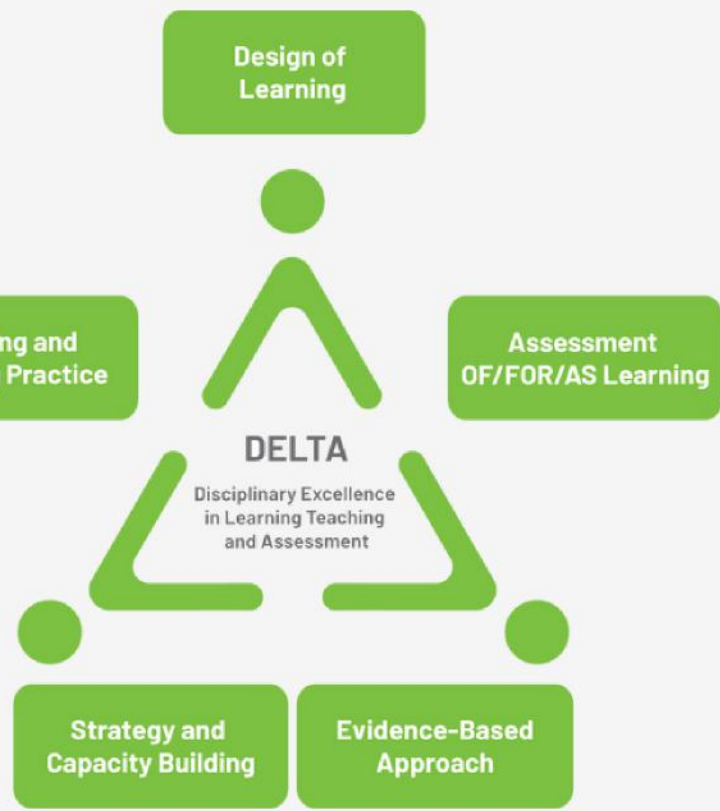
You will carry out an independent investigation, leading to the design of a course programme.

WHAT WILL I LEARN IN EACH DELTA MODULE?

Module Three, option two

You will carry out an independent situation analysis, leading to the design of a change proposal looking at an area of management.

HOW IS DELTA ASSESSED?



Each DELTA Module is assessed in a different way:

- DELTA Module 1: written examination
- DELTA Module 2: a portfolio of coursework, including lesson observations
- DELTA Module 3: a written assignment

HOW IS MODULE 2 ASSESSED?

Module Two is assessed by a portfolio of coursework, including background essays, observed lessons, and a professional development assignment. You will complete five assignments, which all contribute to the final grade.



HOW IS MODULE 2 ASSESSED?

Assignment 1

- The assignment has two parts:
- Reflection and Action (2,000–2,500 words)
 - Experimental Practice (1,500–2,000 words).



HOW IS MODULE 2 ASSESSED?

Assignment 2: Two Language Systems Assignments

Each Language Systems Assignment includes:

- a background essay (2,000–2,500 words) about an area of language systems and related teaching and learning issues
- planning, teaching, and evaluation of a lesson related to the chosen area.

HOW IS MODULE 2 ASSESSED?

Assignment 3: Two Language Systems Assignments

Each Language Skills Assignment includes:

- a background essay (2,000–2,500 words) about an area of language skills and related teaching and learning issues
- planning, teaching, and evaluation of a lesson related to the chosen area.

USEFUL BOOKS FOR TEACHING SKILLS AND SYSTEM

- **A “Learning Teaching” by Jim Scrivener**
- **“An A-Z of ELT” by Scott Thornbury**
- **“Classroom Management Techniques” by Jim Scrivener**
- **“Learner English” by Michael Swan**
- **Jeremy Harmer. The Practice of English Language Teaching**
- **Scott Thornbury. The CELTA Course Trainee Book**

HIGHLY RECOMMENDED BOOKS FOR TEACHING GRAMMAR

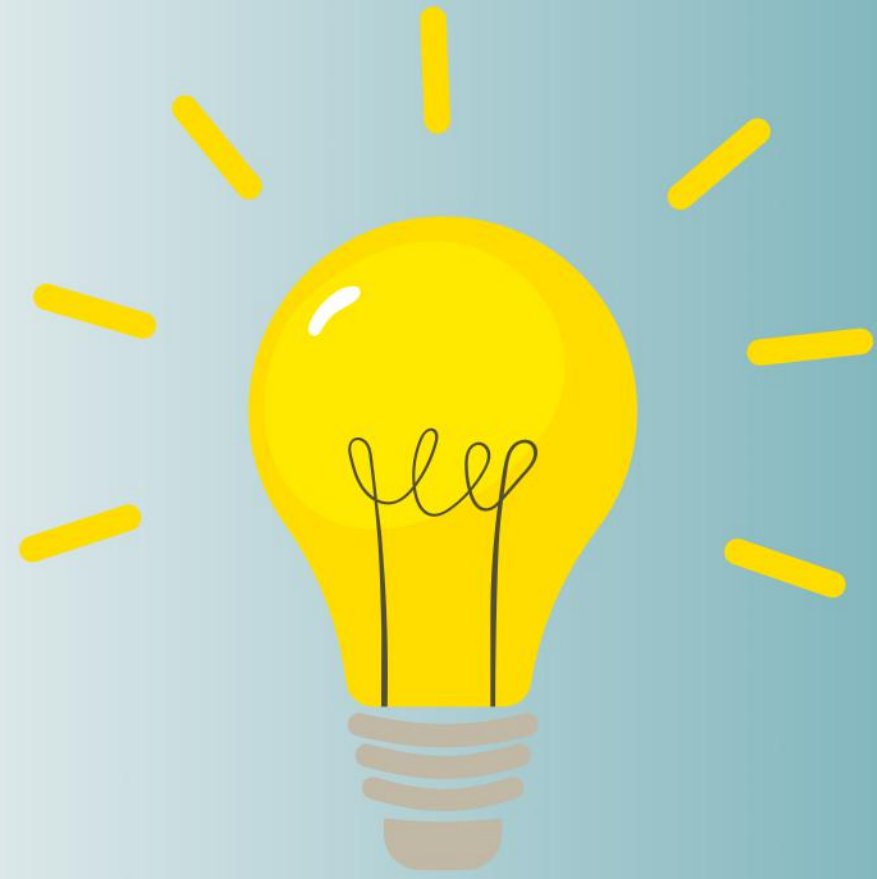
Assignment 3: Two Language Systems Assignments

- Swan's *Practical English Usage*
- or Parrott's *Grammar for English Language Teachers*
- 2. "Advanced English Grammar in Use" by Raymond Murphy
- "Teaching English Grammar" by Jim Scrivener



LET'S TAKE A PRE- CELTA TASK

[https://quizizz.com/join?
gc=102083&source=liveDashboard](https://quizizz.com/join?gc=102083&source=liveDashboard)



WORK ON YOUR GENERAL ENGLISH KNOWLEDGE

**Attend Cambridge Online free
teacher training.**



